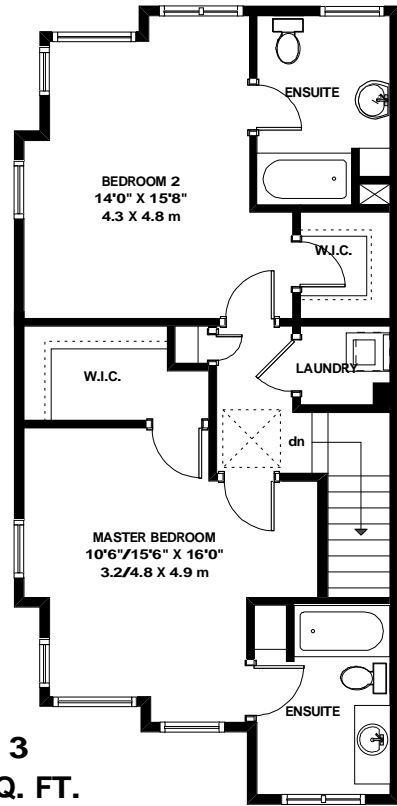
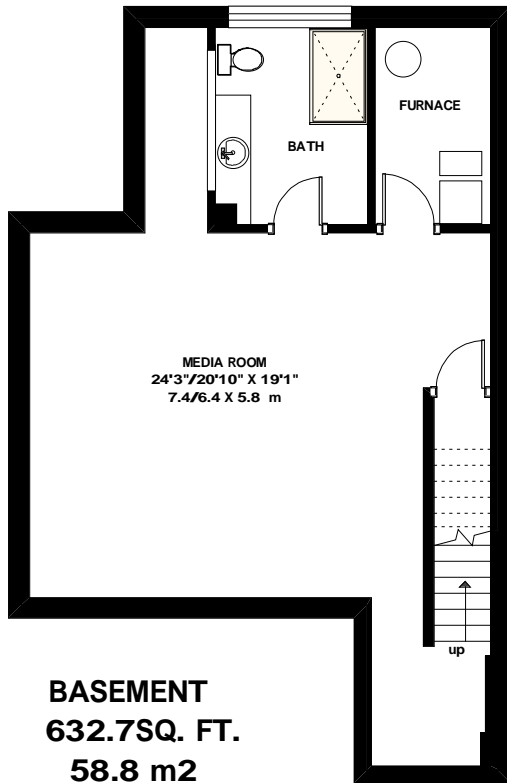


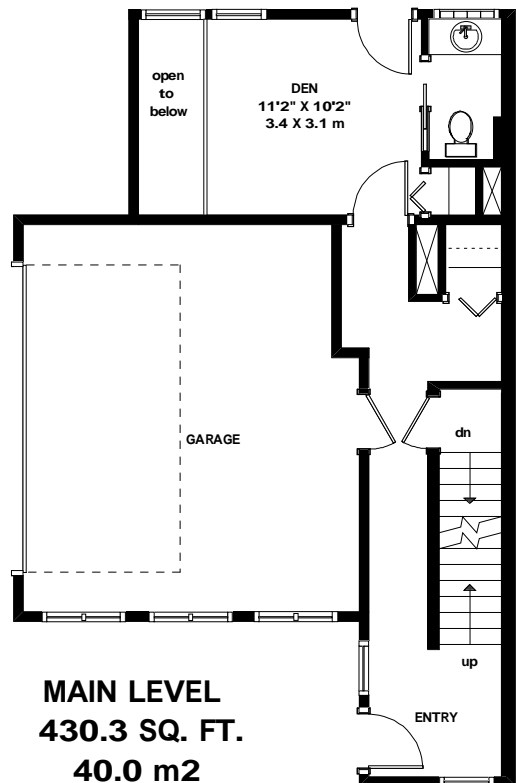
LEVEL 2
756.5 SQ. FT.
70.3 m²



LEVEL 3
723.6 SQ. FT.
67.2 m²



BASEMENT
632.7SQ. FT.
58.8 m²



MAIN LEVEL
430.3 SQ. FT.
40.0 m²

5626 6 TH STREET S.W.
CALGARY, ALBERTA



PREPARED FOR CHRIS ZAHARKO,
ROYAL LE PAGE REAL ESTATE
BY KRISTEN KENNEDY INTERIOR DESIGN LTD.
DIMENSIONS ARE ASSUMED TO BE ACCURATE
BUT ARE NOT WARRANTED TO BE SO.
ERRORS AND OMISSIONS EXEMPTED