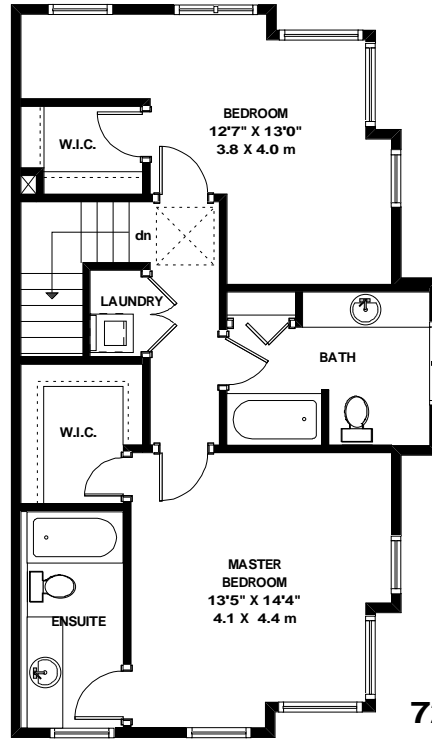
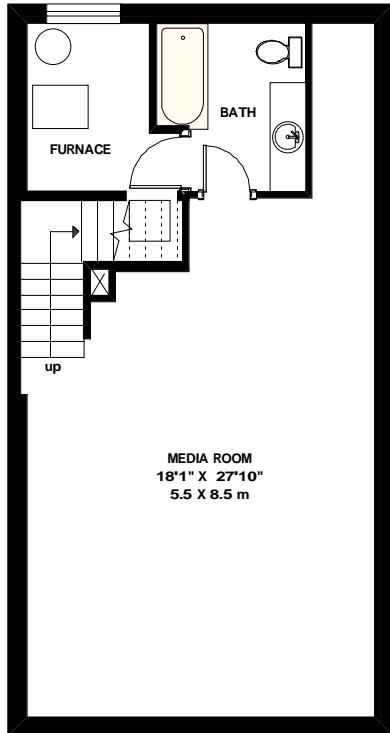


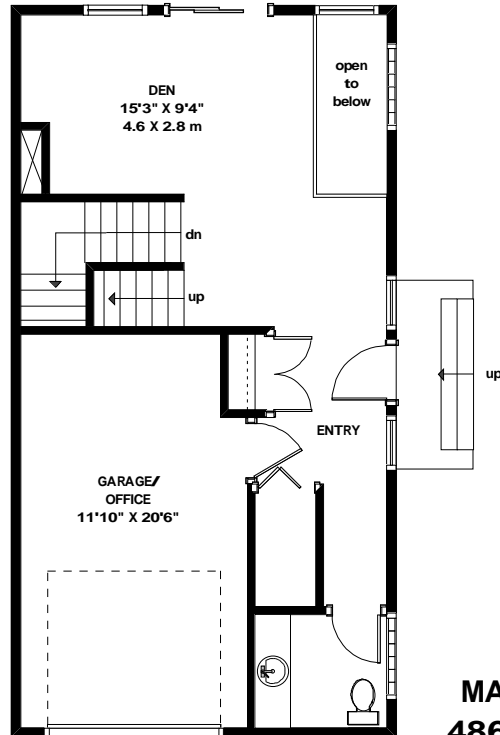
LEVEL 2
747 SQ. FT.
69.4 m2



LEVEL 3
729.4 SQ. FT.
67.8 m2



BASEMENT
587.9 SQ. FT.
54.6 m2



MAIN LEVEL
486.8 SQ. FT.
45.2 m2

5642 6TH STREET S.W.
CALGARY, ALBERTA



PREPARED FOR CHRIS ZAHARKO,
ROYAL LE PAGE REAL ESTATE
BY KIRSTEN KENNEDY INTERIOR DESIGN LTD.

DIMENSIONS ARE ASSUMED TO BE ACCURATE
BUT ARE NOT WARRANTED TO BE SO.
ERRORS AND OMISSIONS EXEMPTED